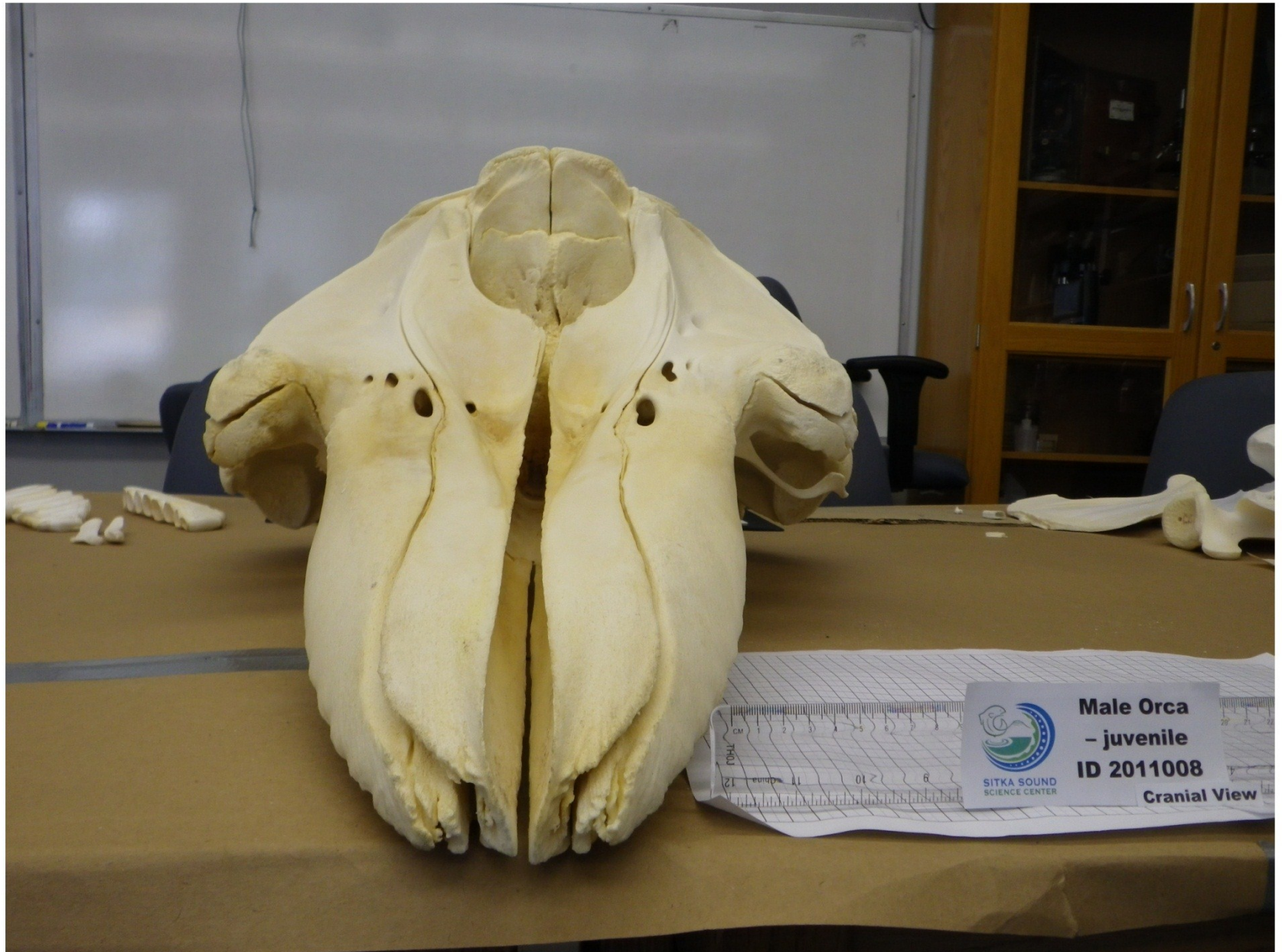


Figure 2a. Skull (cranium) - Caudal View



skull caudal

Figure 2b. Skull (cranium) - Cranial View



skull cranial

Figure 2c. Skull (cranium) - Dorsal View



skull dorsal

Figure 2d. Skull (cranium) – Left Lateral View



skull lateral I

Figure 2e. Skull (cranium) – Right Lateral View



 Male Orca
- juvenile
ID 2011008
Right Lateral View

skull lateral r

Figure 2f. Skull (cranium) – Ventral View



skull ventral

Figure 3a. Lower Jaw (Mandible) – All Views



mandible r ventral



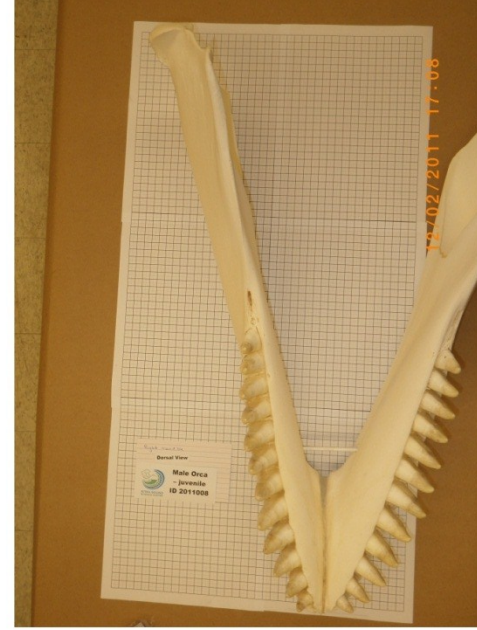
mandible l dorsal



mandible l ventral



mandible r dorsal a



mandible r dorsal b

Figure 4a. Ear Bones (Tympanic Bones) – Left and Right, All Views



ear bone l cranial



ear bone l dorsal



ear bone l lateral l



ear bone l lateral r



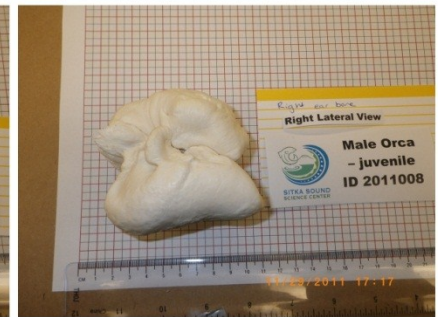
ear bone r cranial



ear bone r dorsal



ear bone r lateral l



ear bone r lateral r



ear bone r ventral

Figure 5a. Hyoids (Basihyoid, Left and Right Stylohyoid, Left and Right Thyrohyoid) – All Views



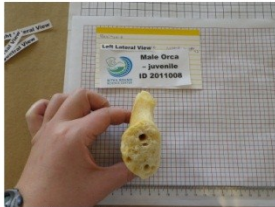
basihyoid caudal



basihyoid cranial



basihyoid dorsal



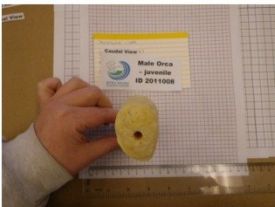
basihyoid lateral l



basihyoid lateral r



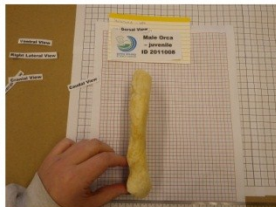
basihyoid ventral



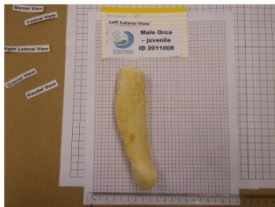
stylohyoid l caudal



stylohyoid l cranial



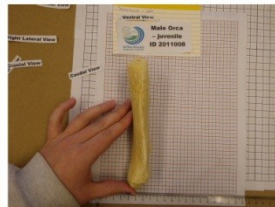
stylohyoid l dorsal



stylohyoid l lateral l



stylohyoid l lateral r



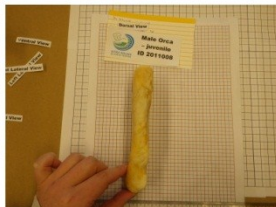
stylohyoid l ventral



stylohyoid r caudal



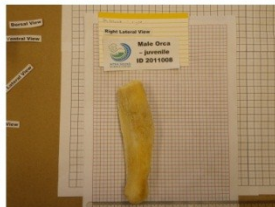
stylohyoid r cranial



stylohyoid r dorsal



stylohyoid r lateral l



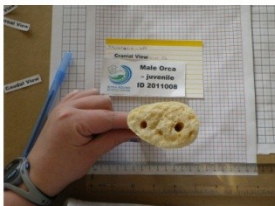
stylohyoid r lateral r



stylohyoid r ventral



thyrohyoid l caudal



thyrohyoid l cranial



thyrohyoid l dorsal



thyrohyoid l lateral l



thyrohyoid l lateral r



thyrohyoid l ventral



thyrohyoid r caudal



thyrohyoid r cranial



thyrohyoid r dorsal



thyrohyoid r lateral l



thyrohyoid r lateral r

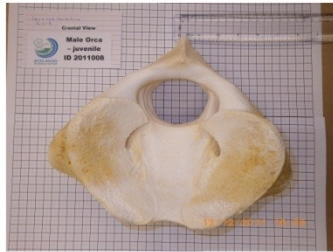


thyrohyoid r ventral

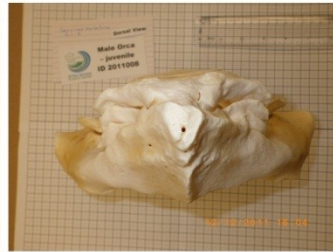
Figure 6a. Cervical Vertebrae (#1-7) – All Views



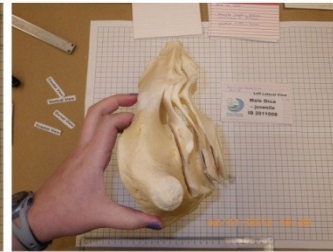
cervical vertebra 01-4 caudal



cervical vertebra 01-4 cranial



cervical vertebra 01-4 dorsal



cervical vertebra 01-4 | lateral



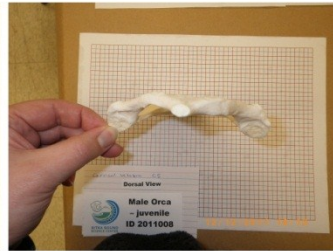
cervical vertebra 01-4 ventral



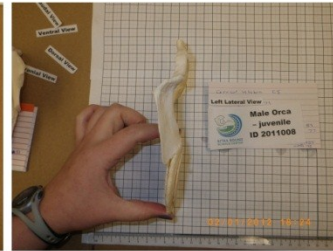
cervical vertebra 05 caudal



cervical vertebra 05 cranial



cervical vertebra 05 dorsal



cervical vertebra 05 | lateral



cervical vertebra 05 ventral



cervical vertebra 06 caudal



cervical vertebra 06 cranial



cervical vertebra 06 dorsal



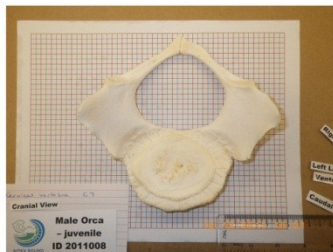
cervical vertebra 06 | lateral



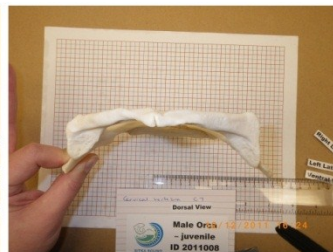
cervical vertebra 06 ventral



cervical vertebra 07 caudal



cervical vertebra 07 cranial



cervical vertebra 07 dorsal

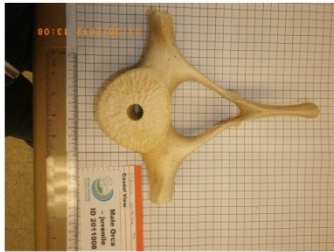


cervical vertebra 07 | lateral



cervical vertebra 07 ventral

Figure 6d. Thoracic Vertebrae (#9-10) – All Views



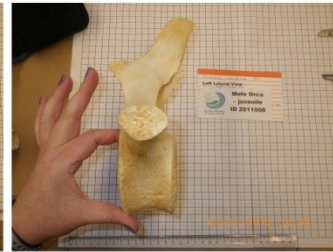
thoracic vertebra 09 caudal



thoracic vertebra 09 cranial



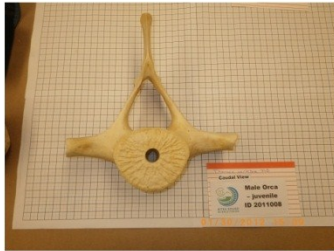
thoracic vertebra 09 dorsal



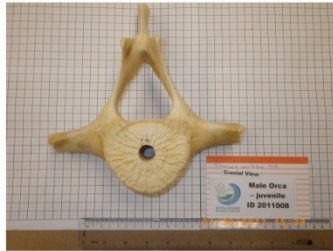
thoracic vertebra 09 l lateral



thoracic vertebra 09 ventral



thoracic vertebra 10 caudal



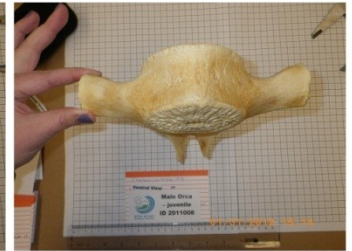
thoracic vertebra 10 cranial



thoracic vertebra 10 dorsal



thoracic vertebra 10 l lateral



thoracic vertebra 10 ventral

